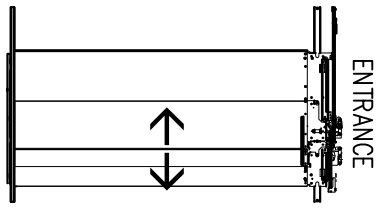
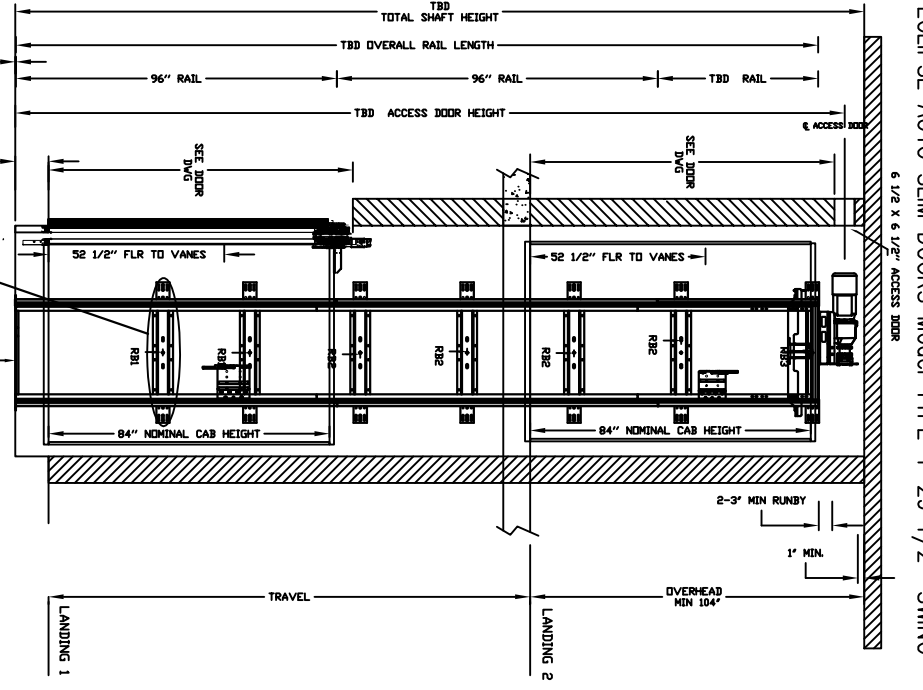
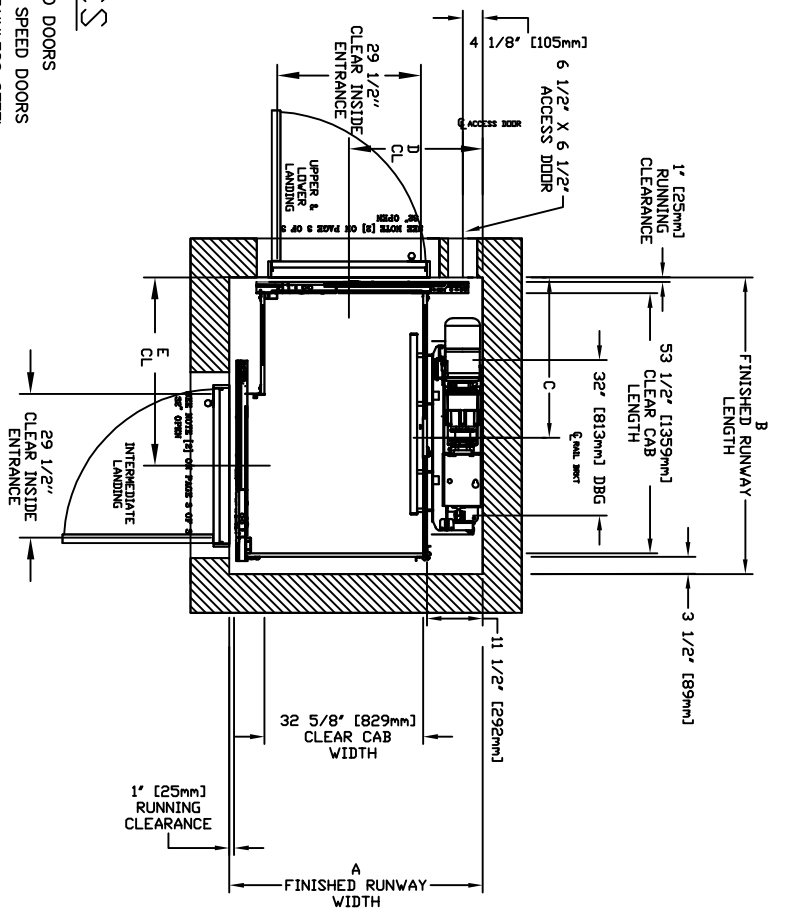


ECLIPSE AUTO SLIM DOORS Model TYPE 4-29 1/2"-SWING



CHARACTERISTICS

- CAB DOOR TYPE: AUTO SLIM 2 SPEED DOORS
- ENTRANCE DOOR TYPE: AUTO SLIM 2 SPEED DOORS
- 2 SPEED DOORS FINISH: PAINT OR STAINLESS STEEL
- FULLY AUTOMATIC OPERATION TO OPEN THE DOORS UPON ARRIVAL AT THE LANDING LIGHTWEIGHT ALUMINUM SILL
- EMERGENCY BACK-UP BATTERY SYSTEM
- INFRARED DETECTION SYSTEM TO RETRACT DOORS BEFORE HITTING AN OBSTRUCTION

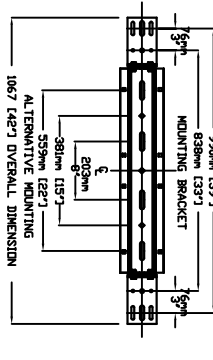


CLEAR INSIDE CAB WIDTH	CLEAR INSIDE CAB LENGTH	A FINISHED RUNWAY WIDTH		B FINISHED RUNWAY LENGTH		C RAIL CENTER LINE	D DOOR CENTER LINE	E DOOR CENTER LINE					
		mm	Inches	mm	Inches				mm	Inches	mm	Inches	
829	32 5/8	1207	47 1/2	1324	52 1/8	1397	55	762	30	699	27 1/2	832	32 3/4
829	32 5/8	1389	53 1/2	1324	52 1/8	1494	61	838	33	699	27 1/2	984	38 3/4
829	32 5/8	1511	59 1/2	1324	52 1/8	1702	67	914	36	699	27 1/2	1137	44 3/4

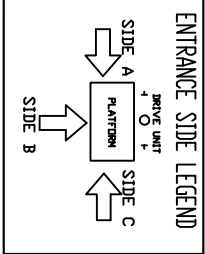
DOCUMENT REVISION 001, DATE: 03/23/17

RESIDENTIAL ELEVATOR ECLIPSE SLIMS DOORS TYPE 4-29 1/2"-SWING

MOUNTING BRACKET
4 RAIL ANCHOR POINTS MIN PER BRACKET
4 PER LINE RAILS CENTER
FULL DOT FORCE PER FASTENER 89 KG (195 LBS)



FINAL RAIL BRACKET	BELOW THE MOTOR CONSULT YOUR REPRESENTATIVE FOR EXACT LOCATION	RAIL FORCES
RB3	32\" (813mm) INTERVALS AFTER 2ND BOTTOM BRACKET	* R1 1382 KG (304 lbs) RAIL ASSY WEIGHT: 194 lbs / 88 kg
INTERMEDIATE RAIL BRACKET	39\" (991mm) 71\" (1804mm) & ABOVE PIT FLOOR	* R2 882 KG (194 lbs) RAIL ASSY WEIGHT: 180 lbs / 82 kg
BOTTOM RAIL BRACKET		* R3 PIT FLOOR TO SUPPORT LOAD (INCLUDES IMPACT) 2909 KG (6400 lbs)



ALL INFORMATION IS SUBJECT TO CHANGE. PLEASE REFERENCE OUR ON-LINE DRAWINGS AT WWW.SAVARIA.COM FOR THE MOST RECENT UPDATES.

THE INFORMATION DISCLOSED HEREIN IS THE EXCLUSIVE PROPERTY OF **savaria** AND MAY NOT BE USED BY OTHERS WITHOUT WRITTEN CONSENT.

SHEET 1/1