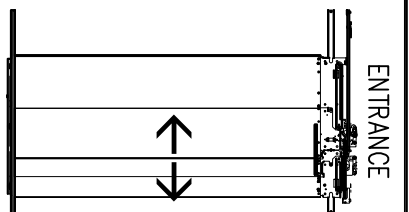
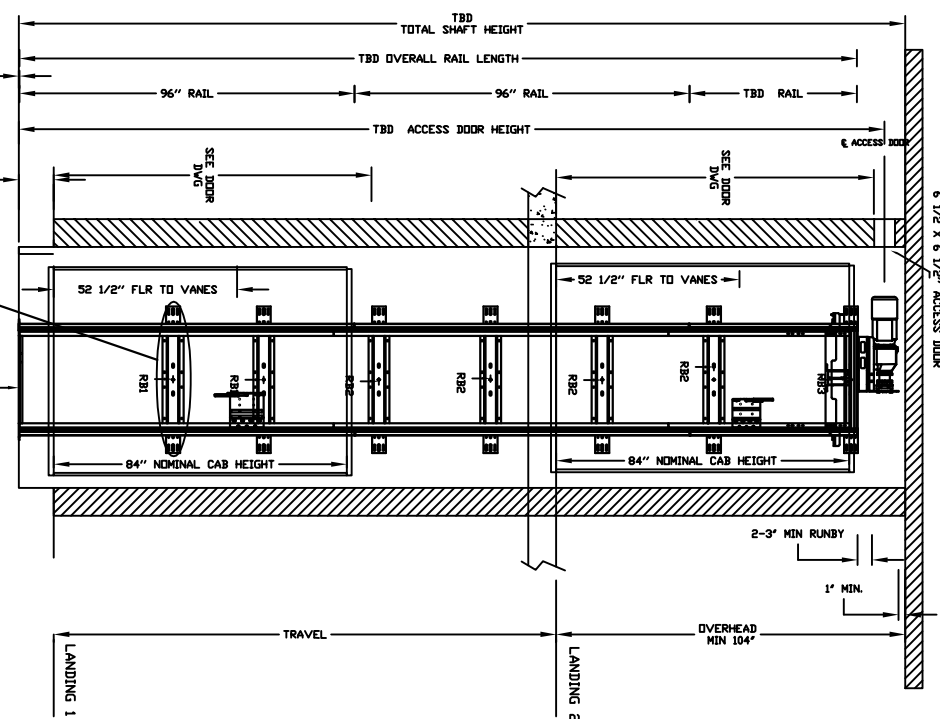
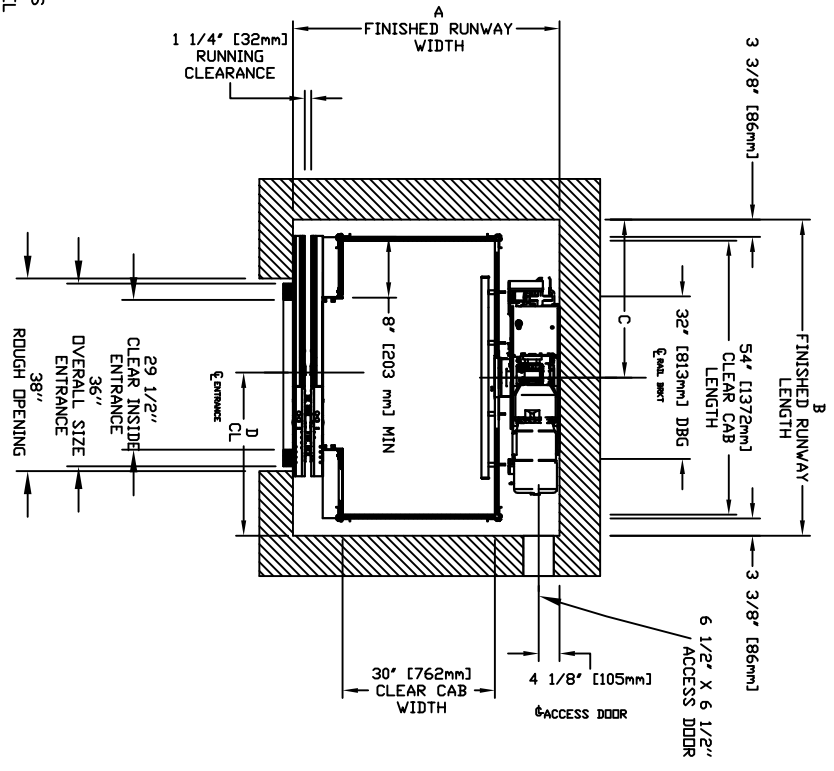


ECLIPSE AUTO SLIM DOORS Model TYPE 5-29 1/2"-SLIM



CHARACTERISTICS

- CAB DOOR TYPE: AUTO SLIM 2 SPEED DOORS
- ENTRANCE DOOR TYPE: AUTO SLIM 2 SPEED DOORS
- 2 SPEED DOORS FINISH: PAINT OR STAINLESS STEEL
- FULLY AUTOMATIC OPERATION TO OPEN THE DOORS UPON ARRIVAL AT THE LANDING LIGHTWEIGHT ALUMINUM SILL
- EMERGENCY BACK-UP BATTERY SYSTEM
- INFRARED DETECTION SYSTEM TO RETRACT DOORS BEFORE HITTING AN OBSTRUCTION



CLEAR INSIDE CAB WIDTH	CLEAR INSIDE CAB LENGTH	A		B		C		D	
		FINISHED RUNWAY WIDTH	FINISHED RUNWAY LENGTH	FINISHED RUNWAY WIDTH	FINISHED RUNWAY LENGTH	RAIL CENTER LINE	DOOR CENTER LINE	RAIL CENTER LINE	DOOR CENTER LINE
762 mm	762 mm	1334 mm	1334 mm	52 1/2\"/>					

DOCUMENT REVISION 001, DATE: 03/23/17

RESIDENTIAL ELEVATOR

ECLIPSE SLIMS DOORS TYPE 5-29 1/2"-SLIM

ALL INFORMATION IS SUBJECT TO CHANGE. PLEASE REFERENCE OUR ON-LINE DRAWINGS AT WWW.SAVARIA.COM FOR THE MOST RECENT UPDATES



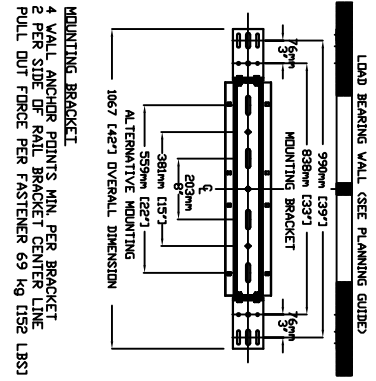
THE INFORMATION DISCLOSED HEREIN IS THE EXCLUSIVE PROPERTY OF SAVARIA

RAIL FORCES	
* R1	* R2
1382 kg [304 lbf]	882 kg [194 lbf]
RAIL ASSY WEIGHT: 180 lbs / ft	
PIT FORCE: R3	
PIT FLOOR TO SUPPORT LOAD (INCLUDES IMPACT)	
2909 kg [6400 lbs]	

FINAL RAIL BRACKET	BELOW THE MOTOR CONCORD REPRESENTATIVE FOR EXACT LOCATION
RB3	32\"/>

INTERMEDIATE RAIL BRACKET	2ND FLOOR ABOVE PIT
RB2	39\"/>

BOTTOM RAIL BRACKET	71\"/>
RB1	71\"/>



4 WALL ANCHOR POINTS MIN PER BRACKET
2 PER SIDE UP RAIL BRACKET CENTER LINE
PULL OUT FORCE PER FASTENER 69 kg (152 LBS)