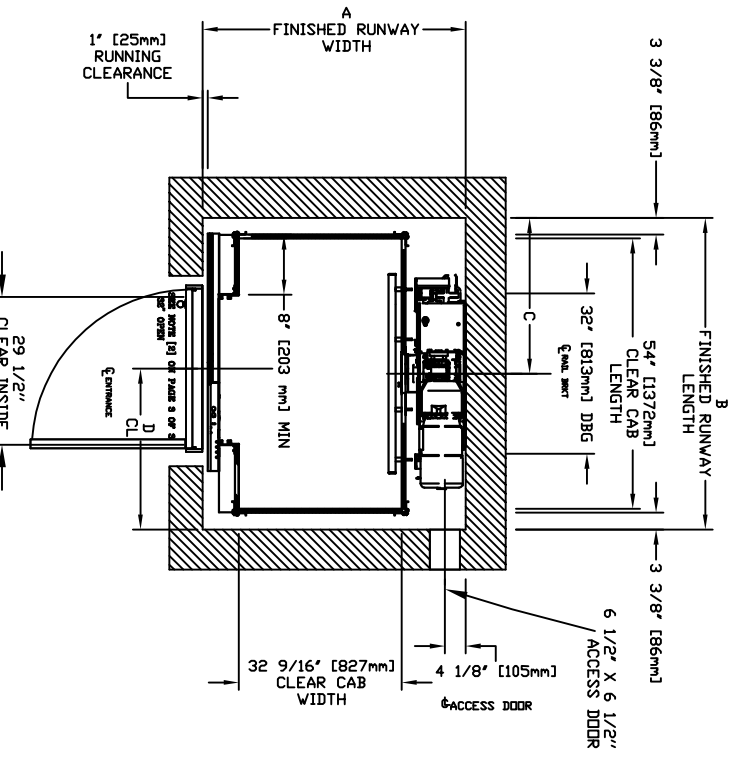
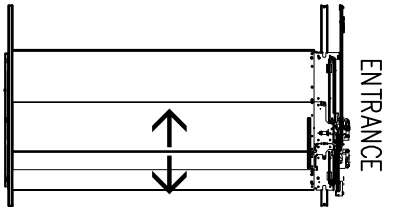
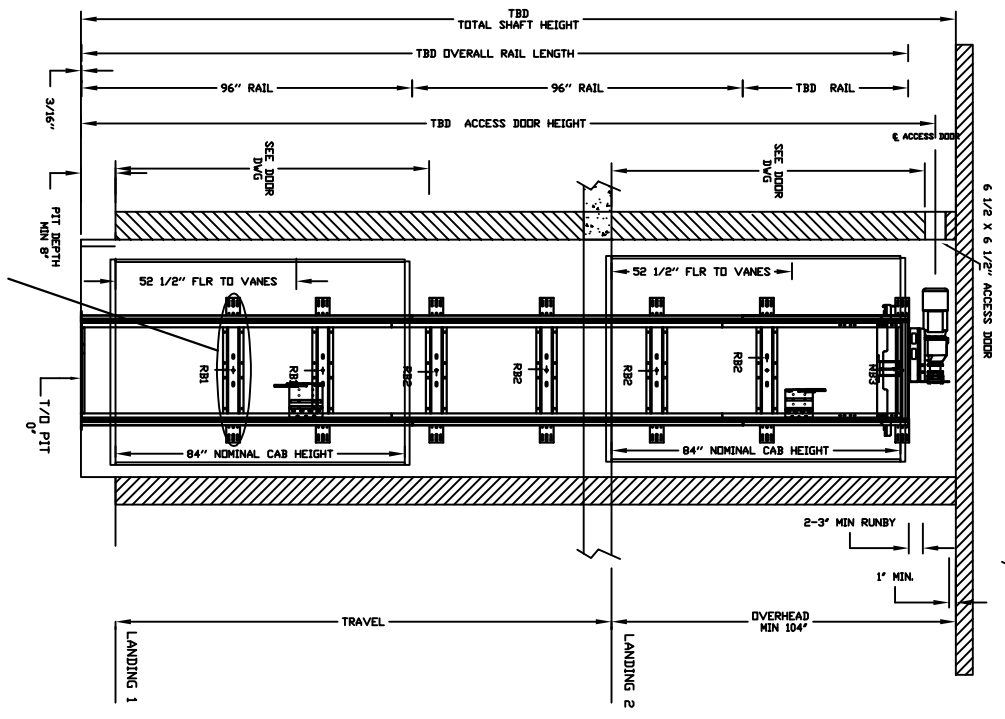


ECLIPSE AUTO SLIM DOORS Model TYPE 5-29 1/2"-SWING



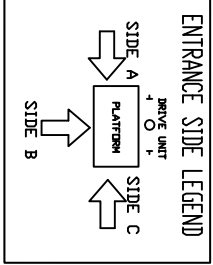
CHARACTERISTICS

- CAB DOOR TYPE: AUTO SLIM 2 SPEED DOORS
- ENTRANCE DOOR TYPE: AUTO SLIM 2 SPEED DOORS
- 2 SPEED DOORS FINISH: PAINT OR STAINLESS STEEL
- FULLY AUTOMATIC OPERATION TO OPEN THE DOORS UPON ARRIVAL AT THE LANDING LIGHTWEIGHT ALUMINUM SILL
- EMERGENCY BACK-UP BATTERY SYSTEM
- INFRARED DETECTION SYSTEM TO RETRACT DOORS BEFORE HITTING AN OBSTRUCTION

CLEAR INSIDE CAB WIDTH	CLEAR INSIDE CAB LENGTH	A FINISHED RUNWAY WIDTH		B FINISHED RUNWAY LENGTH		C RAIL CENTER LINE		D DOOR CENTER LINE	
		mm	Inches	mm	Inches	mm	Inches	mm	Inches
827	32 9/16	1219	48	1334	52 1/2	1429	56 1/4	714	28 1/8
827	32 9/16	1372	54	1334	52 1/2	1581	62 1/4	791	31 1/8
827	32 9/16	1524	60	1334	52 1/2	1734	68 1/4	867	34 1/8

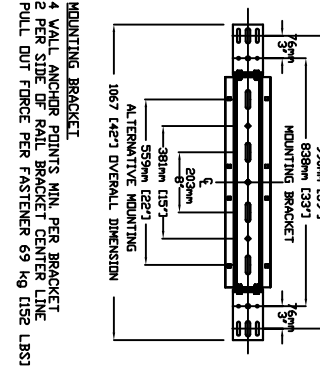
DOCUMENT REVISION 001, DATE: 03/23/17

RESIDENTIAL ELEVATOR ECLIPSE SLIMS DOORS TYPE 5-29 1/2"-SWING



RAIL FORCES	RAIL WEIGHT	PIT FORCE	PIT FLOOR TO SUPPORT LOAD (INCLUDES IMPACT)
* R1	1382 kg [304 lbf]	R3	2909 kg [6400 lbf]
* R2	882 kg [194 lbf]		
	245 kg / ft		

FINAL RAIL BRACKET	BELOW THE MOTOR CONSULT YOUR REPRESENTATIVE FOR EXACT LOCATION
RB3	32" [813mm]
INTERMEDIATE RAIL BRACKET	INTERVALS AFTER 2nd BOTTOM BRACKET
RB2	39" [991mm]
BOTTOM RAIL BRACKET	71" [1804mm] & ABOVE PIT FLOOR
RB1	



- 1. WALL ANCHOR POINTS MIN. PER BRACKET
- 2. PER STUD PER RAIL BRACKET PER BRACKET
- PULL OUT FORCE PER FASTENER: 69 kg [152 lbs]

ALL INFORMATION IS SUBJECT TO CHANGE. PLEASE REFERENCE OUR ON-LINE DRAWINGS AT WWW.SAVARIA.COM FOR THE MOST RECENT UPDATES

