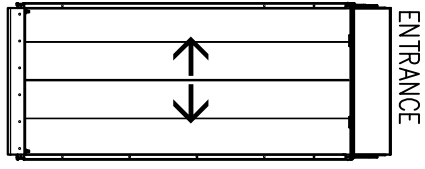
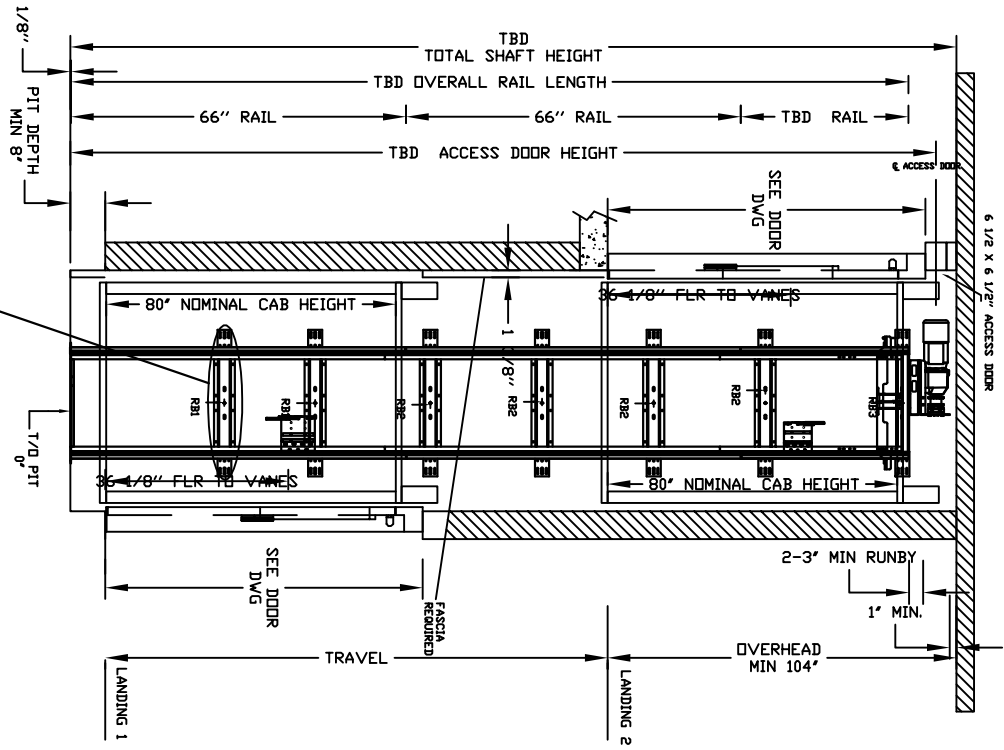


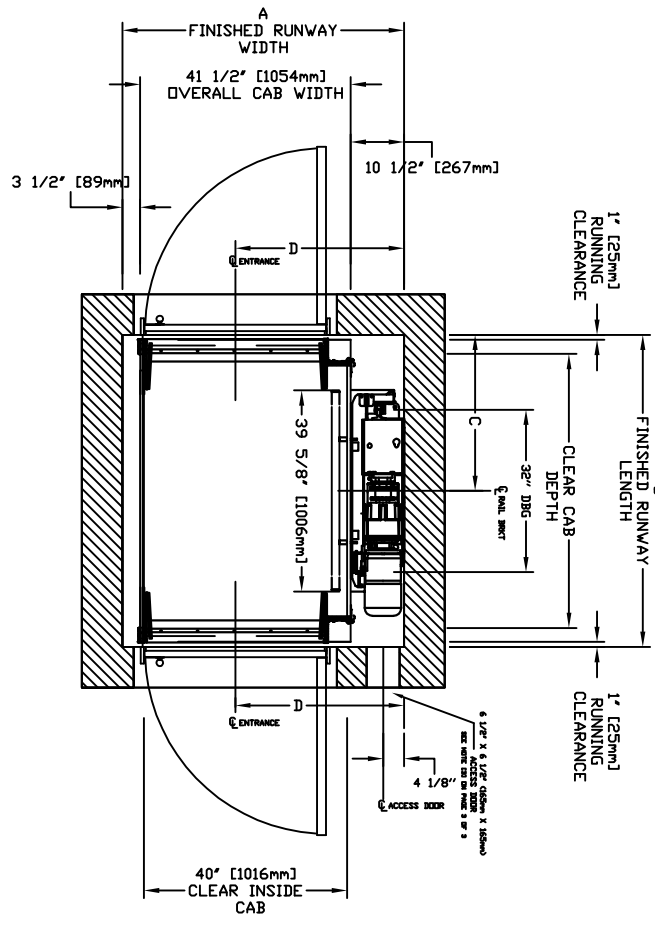
# ECLIPSE BIFOLD Model TYPE 2



## ENTRANCE

### CHARACTERISTICS

CAB DOOR TYPE: AUTO BIFOLD DOORS  
 ENTRANCE DOOR TYPE: SWING DOORS  
 BIFOLD DOORS FINISH: PAINT OR STAINLESS STEEL  
 FULLY AUTOMATIC OPERATION TO OPEN THE DOORS UPON ARRIVAL AT THE LANDING  
 LIGHTWEIGHT ALUMINUM SILL  
 FOR CAB LONGER THAN 54" EXTENSION PANELS  
 WILL BE PROVIDED AT THE ENDS OF EACH WALLS



CLEAR INSIDE CAB WIDTH	CLEAR INSIDE CAB LENGTH	A FINISHED RUNWAY WIDTH		B FINISHED RUNWAY LENGTH		C RAIL CENTER LINE		D DOOR CENTER LINE	
		mm	Inches	mm	Inches	mm	Inches	mm	Inches
1016	40	1219	48	1410	55 1/2	1410	705	27 3/4	845
1016	40	1372	54	1410	55 1/2	1562	61 1/2	30 3/4	845
1016	40	1524	60	1410	55 1/2	1715	67 1/2	33 3/4	845

DOCUMENT REVISION 000, DATE: 01/25/17

## RESIDENTIAL ELEVATOR ECLIPSE BIFOLD TYPE 2-40" WIDTH

ALL INFORMATION IS SUBJECT TO CHANGE.  
 PLEASE REFERENCE OUR ON-LINE DRAWINGS AT  
[www.savaria.com](http://www.savaria.com) FOR THE MOST RECENT UPDATES



RAIL FORCES	
* R1	* R2
1382 kg [3044 lb]	882 kg [1944 lb]
1382 kg [3044 lb]	882 kg [1944 lb]
RAIL WEIGHT: 180 lbs / ft	RAIL WEIGHT: 180 lbs / ft
PIT FORCE: R3	
PIT FLOOR TO SUPPORT LOAD (INCLUDES IMPACT) 2909 kg [6400 lbs]	

MOUNTING BRACKET	
4 WALL ANCHOR POINTS MIN. PER BRACKET	
2 PER SIDE OF RAIL BRACKET CENTER LINE	
PULL OUT FORCE PER FASTENER 69 kg [152 LBS]	

